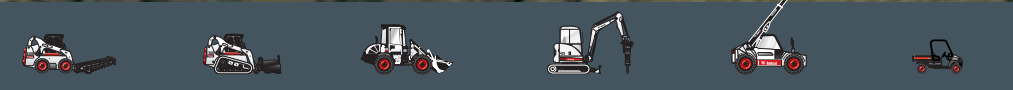




**Bobcat®**

**335**

Compact Excavators



# Exceptional stability

# Exceptional performance

With an operating weight of 4.2 tonnes, the Bobcat® 335 compact excavator is ideal for general excavation work, digging for foundations, demolition work, lifting jobs and much more.

Thanks to ideal weight distribution, the 335 offers exceptional stability in all operating conditions. Like all Bobcat® compact excavators, the 335 provides high breakout forces, fast cycle times and superior dependable performance.

## Two dipper lengths

The standard dipper stick gives a digging depth of nearly 3.6 m, while the optional long dipper stick provides a maximum digging depth of 3.9 m.

## Operator comfort

A spacious cab with state-of-the-art low-effort joystick controls enables the operator to work comfortably, safely and productively all day long. Visibility to the boom and bucket is excellent thanks to the large glazed surface at the front of the excavator cab.



## Auxiliary hydraulics

Auxiliary hydraulics, which provide 75 l/min of flow, are standard equipment.

## Maintenance

Class-leading service access. A large rear tailgate provides immediate unobstructed access to all routine service points. Similar access design is provided at other points around the machine. All covers are designed to afford good protection for components and yet offer easy access for routine maintenance and service.

# Specifications

## Weights

Operating weight with ROPS canopy, rubber tracks, counterweight, 610 mm bucket	4152 kg
Additional weight for cab with heater	119 kg
Additional weight for cab with HVAC	141 kg
Additional weight for steel tracks	72 kg

## Engine

Make / model	Kubota / V2203-M-DI-E2B-BC-4
Fuel / Cooling	Diesel / Liquid
Maximum power at 2400 RPM (ISO 9249)	30.3 kW
Torque at 1500 RPM (ISO 9249)	140.3 Nm
Number of cylinders	4
Displacement	2.2 l
Bore / Stroke	87.0 mm / 92.4 mm
Alternator	12 V — 90 A — open frame with internal regulator
Starter	12 V — gear reduction type — 2.0 kW

## Controls

Steering	Direction and speed controlled by two hand levers or foot pedals
Hydraulics	Two joysticks control boom, bucket, dipperstick and upper structure slew

## Hydraulic System

Pump type	Engine driven single outlet variable displacement piston pump with pressure compensating, load sensing and torque limiter controls.
Pump capacity	108 l/min
Auxiliary flow	75 l/min
Control valve	Nine-spool, closed centre, individually compensated

## Performance

Digging force, dipperstick	23406 N
Digging force, long dipperstick	20128 N
Digging force, bucket	35105 N
Drawbar pull	34838 N
Ground pressure with ROPS canopy and rubber tracks	33.1 kPa
Travel speed, low range	3.2 km/h
Travel speed, high range	5.5 km/h
Maximum digging depth	3564 mm

## Slew System

Boom swing, left	90°
Boom swing, right	50°
Slew circle	Single row shear-type ball bearings with internal gear
Slew drive	Orbit motor
Slew rate	9.0 RPM

## Traction

Track width, rubber, standard	320 mm
Number of track rollers per side	1 top, 5 bottom;
Gradeability	30°

## Brakes

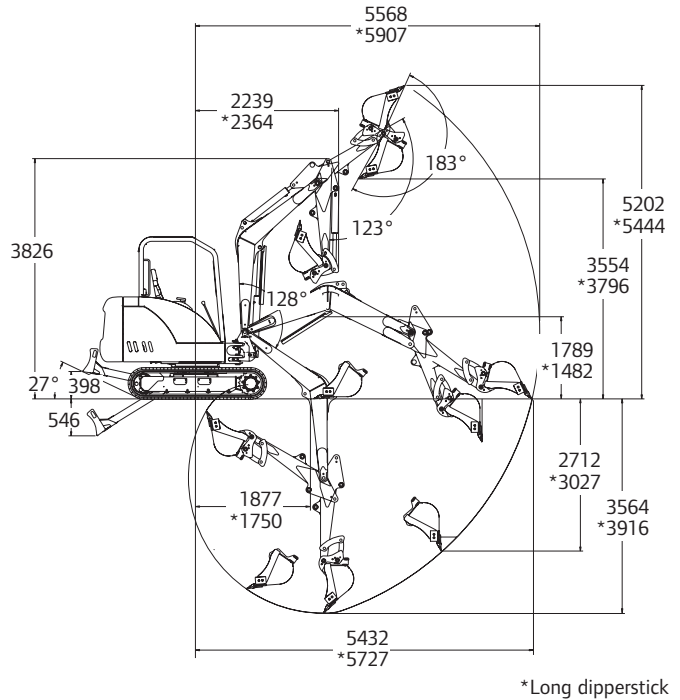
Travel brake	Hydraulic lock on motor
Slew brake	Hydraulic lock on motor and pin lock

## Fluid Capacities

Cooling system	17.0 l
Engine lubrication plus oil filter	7.1 l
Fuel reservoir	46.6 l
Hydraulic reservoir	29.5 l
Hydraulic system	44.0 l

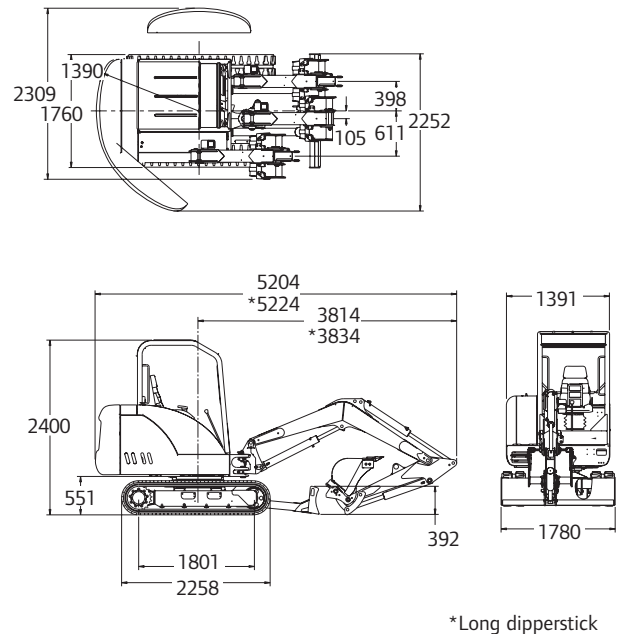
## Working Range

All dimensions in mm.



## Dimensions

All dimensions in mm.





**Bobcat EMEA**

Drève Richelle 167  
B-1410 Waterloo, Belgium